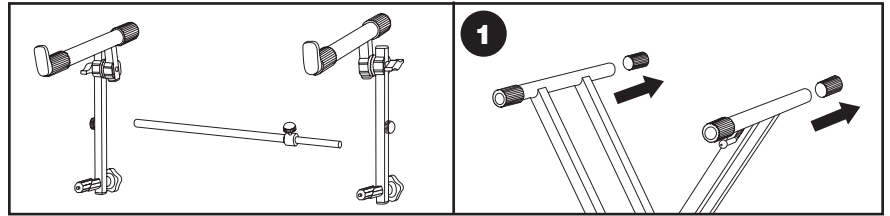


PROLINE®

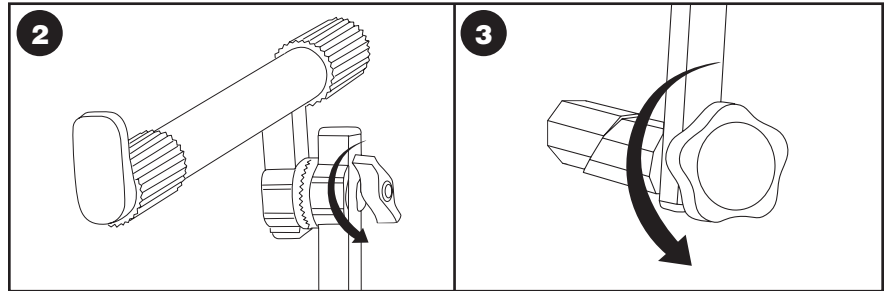
PL400T Instructions

Box Contents: Two (2) tier legs, One (1) adjustable center support

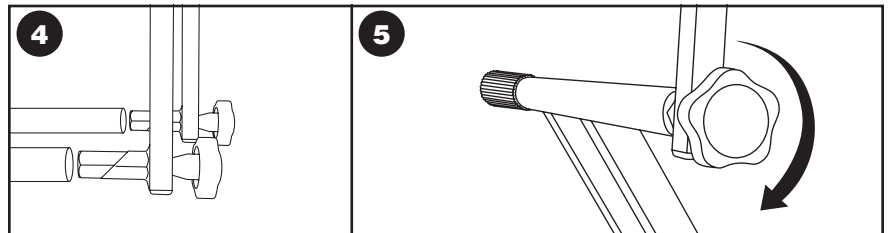
1 Remove the two rear caps from your keyboard stand.



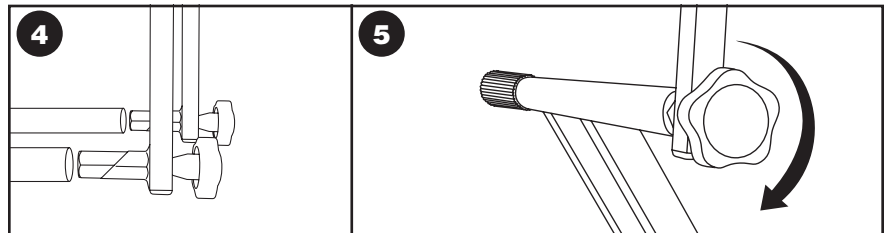
2 Loosen the angle control knobs. Rotate arms to 90 degrees. Tighten angle control knobs.



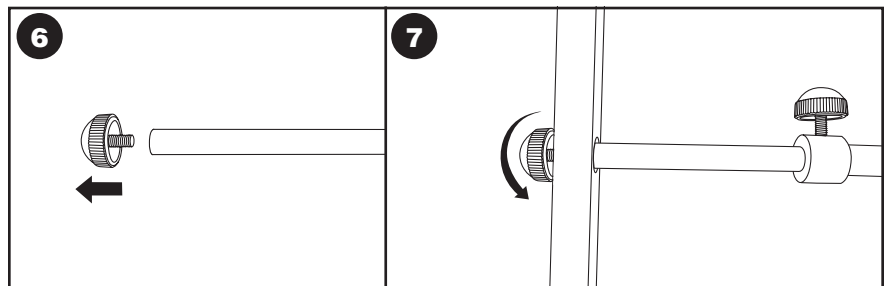
3 Now, loosen both mounting knobs.



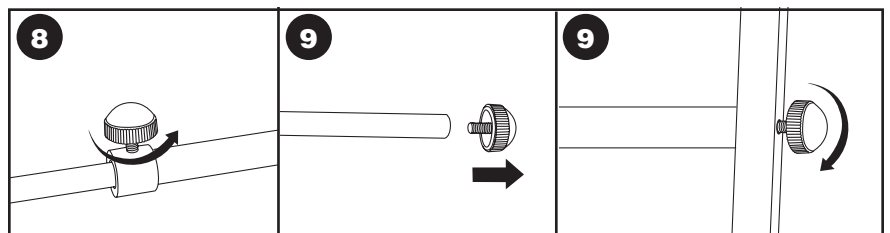
4 Insert mounting attachment to rear of keyboard stand.



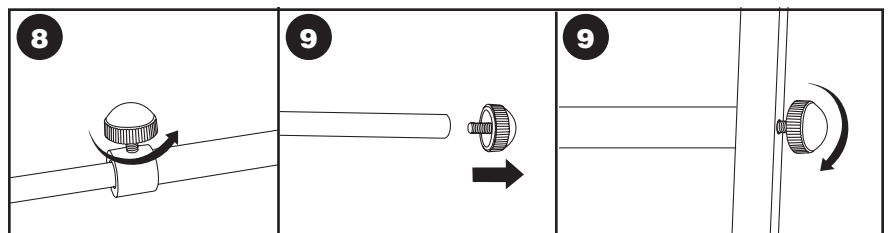
5 Tighten both mounting knobs to secure tier on stand.



6 Remove a side-knob from the center support bar. Place that end of the bar into one of the vertical bars of the tier.

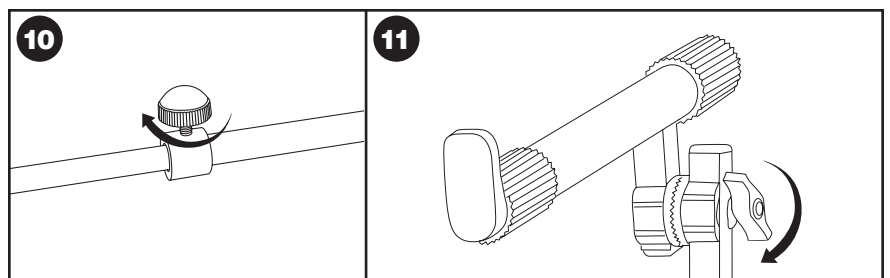


7 Thread side-knob back into the center support bar through the vertical bar.



8 Loosen center knob on the center support bar.

9 Repeat instructions #6 on other end of center support bar.



10 Tighten center knob on the center support bar.

11 Now, use the angle control knobs to rotate tier arms to desired angle.

